



G.A.L. Manufacturing Corporation

50 East 153rd Street,
Bronx, N.Y. 10451

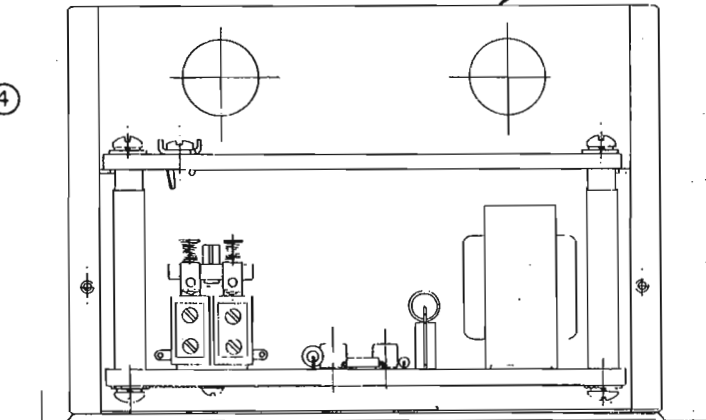
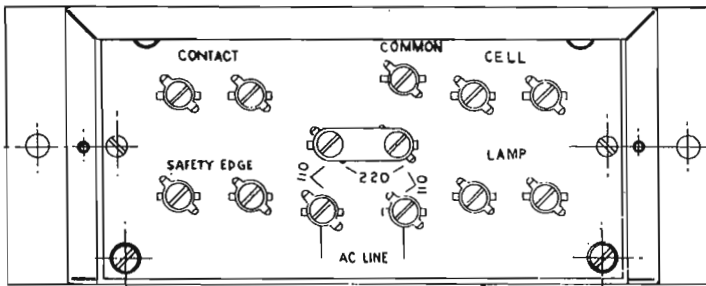
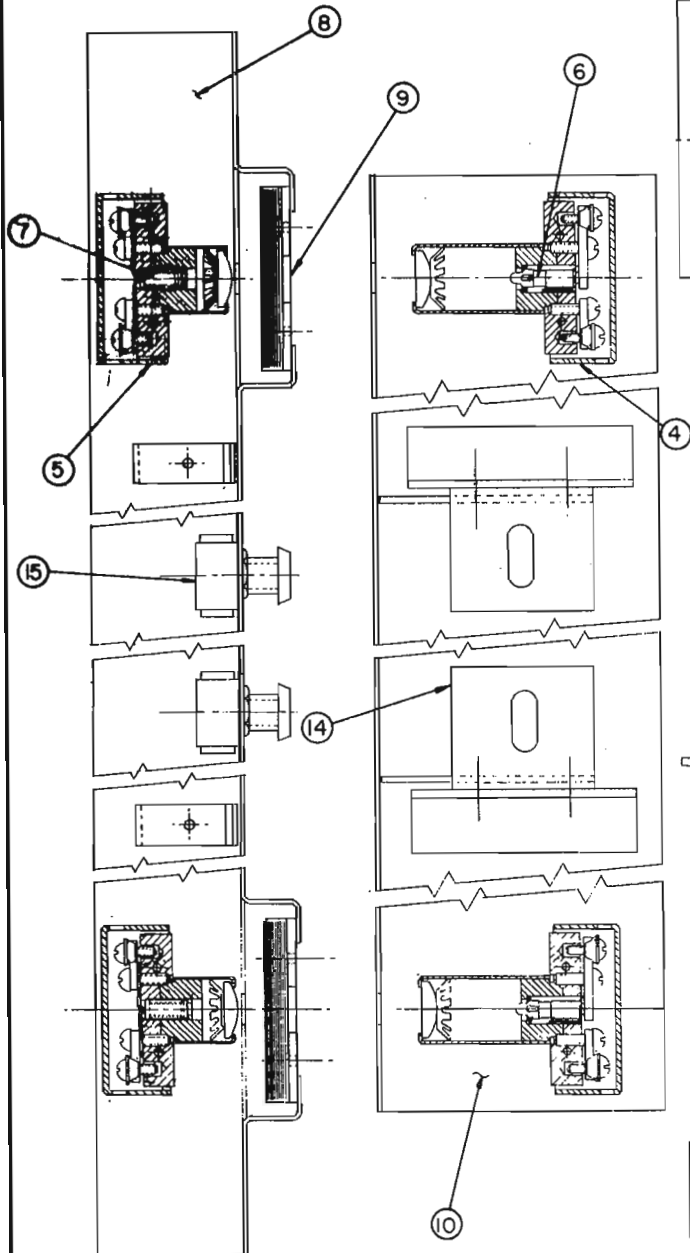
Phone 718-292-9000
Toll Free 877-425-3538
877-425-7763

Fax 718-292-2034
Web www.gal.com
E-mail info@gal.com

ELECTRIC EYE		
MODEL	ITEM	PART DWG. No.
TYPE T	ELECTRIC EYE (DISCONTINUED-PARTS AVAILABLE)	EE-1
TYPE IREE	ELECTRIC EYE (DISCONTINUED-PARTS AVAILABLE)	IREE (PAGE 1 TO 5)

③ CELL ASS'Y

② LAMP ASS'Y



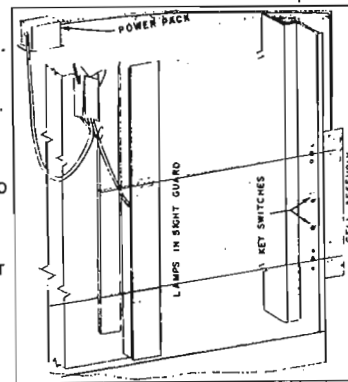
NOTES:

- (1) POWER PACK SUPPLIED AS UNIT. IF PARTS REQUIRED, RETURN UNIT TO G.A.L. FOR REPAIRS.
- (2) DOUBLE BEAM SHOWN, CAN ALSO BE SUPPLIED FOR SINGLE BEAM. (HIGH BEAM OR LOW BEAM)
- (3) LAMP UNITS MOUNTED ON SIGHT GUARD WHEN SUPPLIED WITH G.A.L. SAFETY EDGE.

DISCONTINUED
ONLY PARTS 4,5,& 7 AVAILABLE
REPLACED BY IREE

PARTS LIST

PART NO.	PART NAME
EE-1-1	"T" POWER PACK
EE-1-2	LAMP ASS'Y *
EE-1-3	CELL ASS'Y *
EE-1-4	LAMP UNIT
EE-1-5	CELL UNIT
EE-1-6	GE # 253X BULB
EE-1-7	CL-603-AL CELL
EE-1-8	CELL MTG BRACKET *
EE-1-9	CELL MTG BRACKET CLAMP
EE-1-10	LAMP MTG BRACKET
EE-1-11	2-WIRE CABLE(LAMP SIDE) NOT SHOWN
EE-1-12	3-WIRE CABLE(CELL SIDE) NOT SHOWN
EE-1-13	SIGHT GUARD (NOT SHOWN)*
EE-1-14	LAMP MTG BRACKET SUPPORT ANGLES
EE-1-15	KEYED DISCONNECT SWITCH (SUPPLIED AS OPTIONAL)



IMPORTANT

WHEN ORDERING PARTS, GIVE PART NUMBER AND PART NAME. SPECIFY HAND OF OPENING, OPENING WIDTH SIZE, DOOR TYPE(S/S, 2 SP,C/P OR 2 SP/CP)

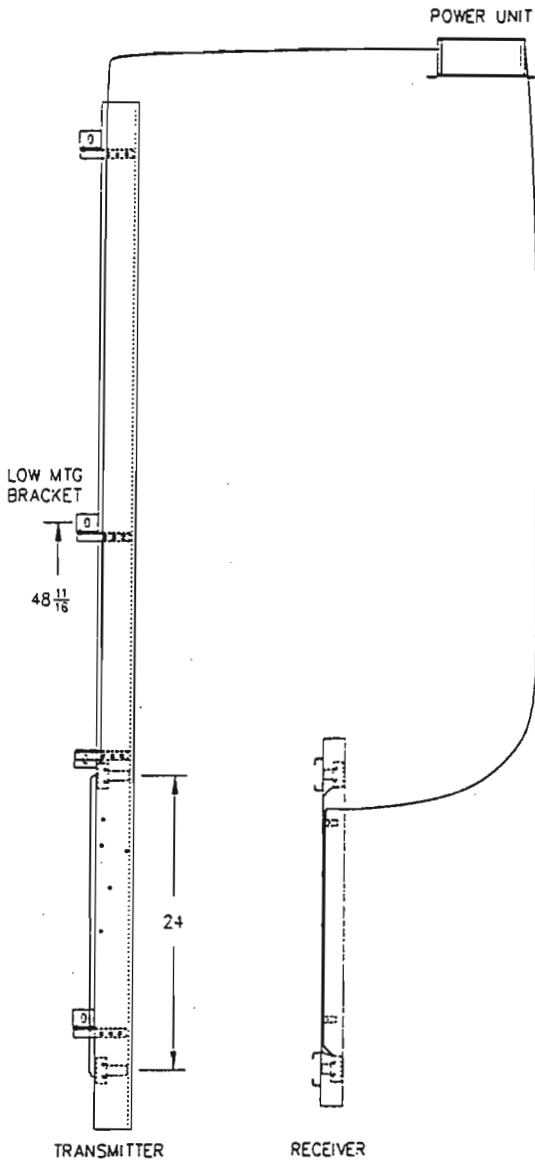
R.H. - SHOWN
L.H. - OPPOSITE AS SHOWN

G.A.L. G. A. L. MANUFACTURING CORP.
50 EAST 151ST STREET BRONX, N. Y. 10451

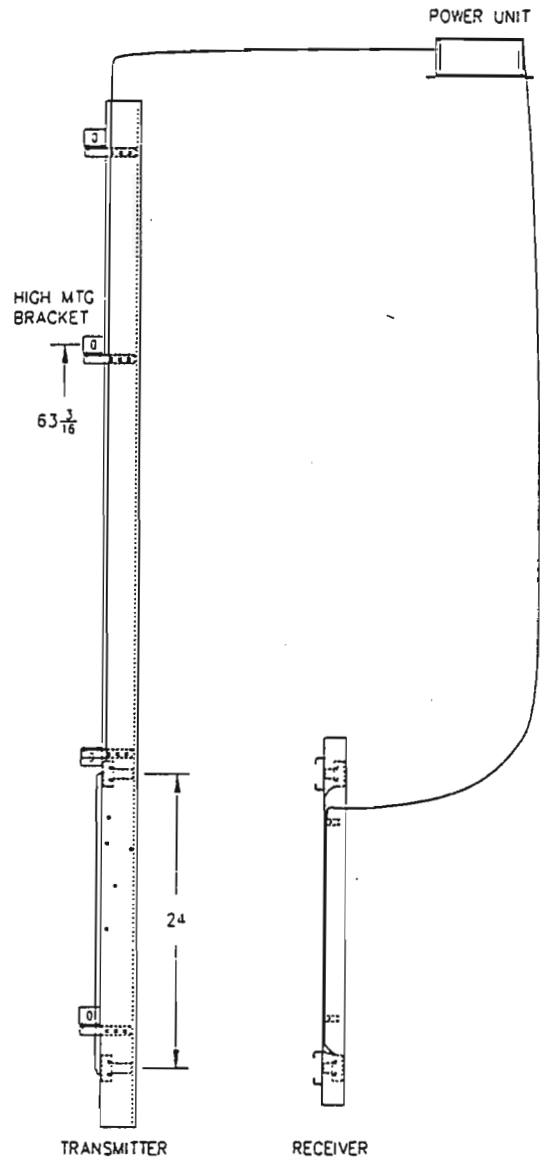
TYPE "T" ELECTRIC EYE

1	MIN SALES	7-70	SCALE FULL DIMSET-NONE	DATE 9-10-73
NO	REVISION	DATE	CHK BY S ADLER	
			CHK BY G F D	EE- 1

SINGLE SPEED AND TWO SPEED TYPE "2IREE" 2-BEAM INFRARED ELECTRIC EYE WITH 84" SIGHT GUARD (USED WITH G.A.L. SAFETY EDGE)



R.H. SHOWN
L.H. OPPOSITE



R.H. SHOWN
L.H. OPPOSITE

SUPPLY BOOKLET S-10075-6.1
WITH EVERY ASSEMBLY

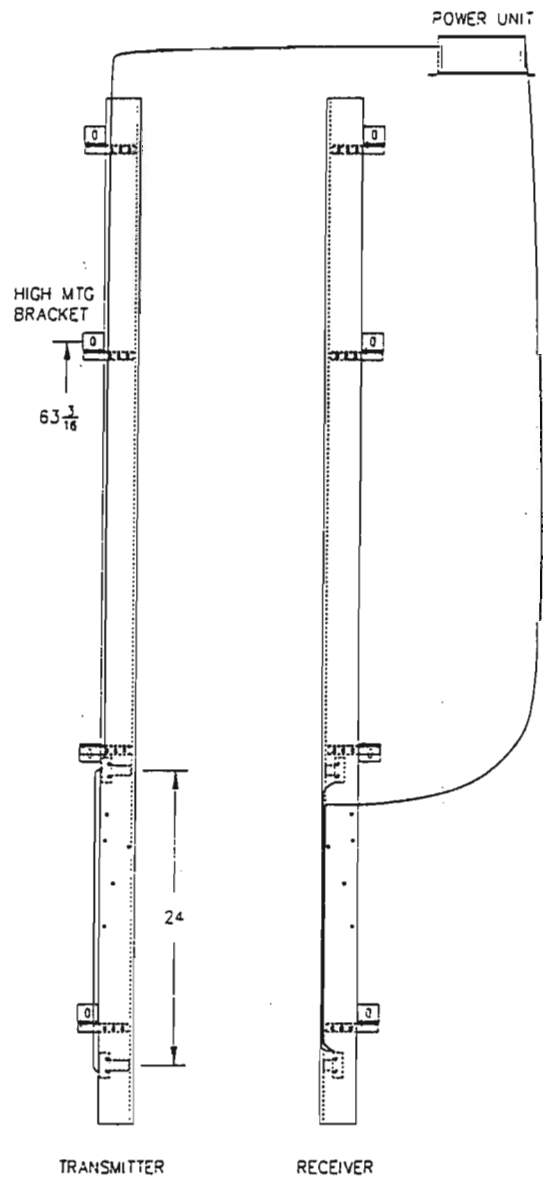
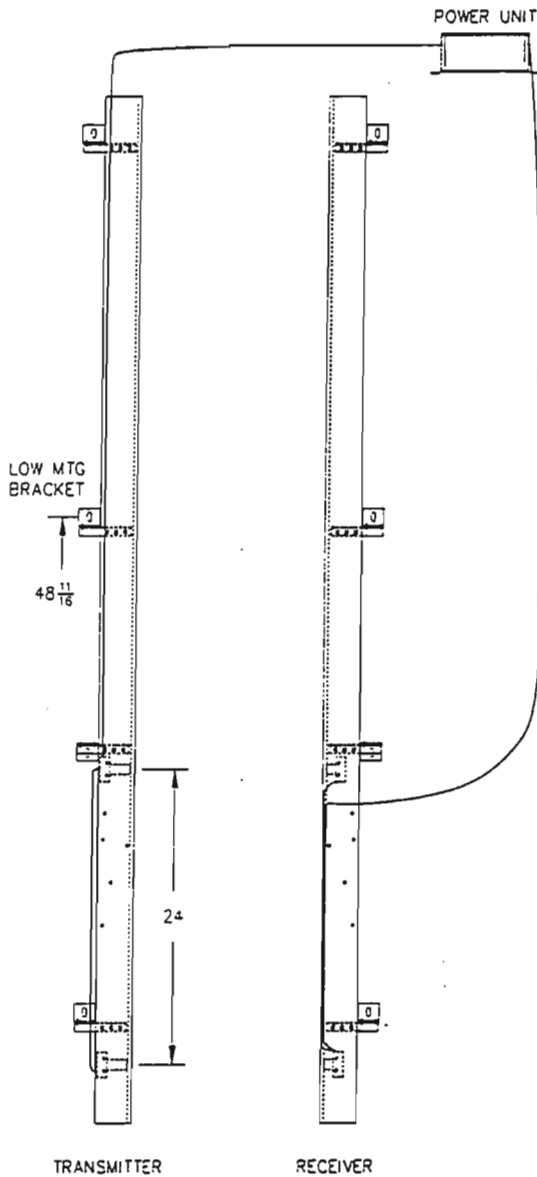
PART No.	"M" DIM.	S/S D.O.	2/SP D.O.
IREE-0001R IREE-0001L	11/15	22-39	24-39

INCLUDES MOUNTING HARDWARE No. IREE-0020N

PART No.	"M" DIM.	S/S D.O.	2/SP D.O.
IREE-0002R IREE-0002L	19/23	40-48	40-52
	27-35	/	53-72

INCLUDES MOUNTING HARDWARE No. IREE-0020N

CENTER PARTING AND TWO SPEED CENTER PARTING TYPE "2IREE" 2-BEAM INFRARED ELECTRIC EYE WITH 84" SIGHT GUARD (USED WITH G.A.L. SAFETY EDGE)



SUPPLY BOOKLET S-10075-6.1
WITH EVERY ASSEMBLY

PART No.	"M" DIM.	C/P D.O.	2S/CP D.O.
IREE-0003N	11/15	24-49	/
	15	/	40-49

INCLUDES (2) MOUNTING HARDWARE No. IREE-0020N

PART No.	"M" DIM.	C/P D.O.	2S/CP D.O.
IREE-0004N	19/23	50-83	/
	23	/	60-83

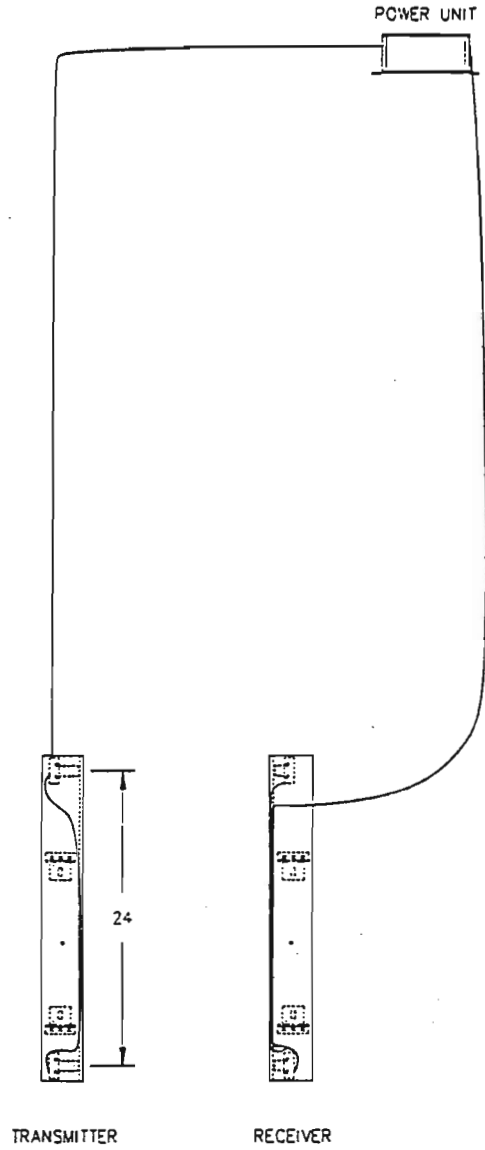
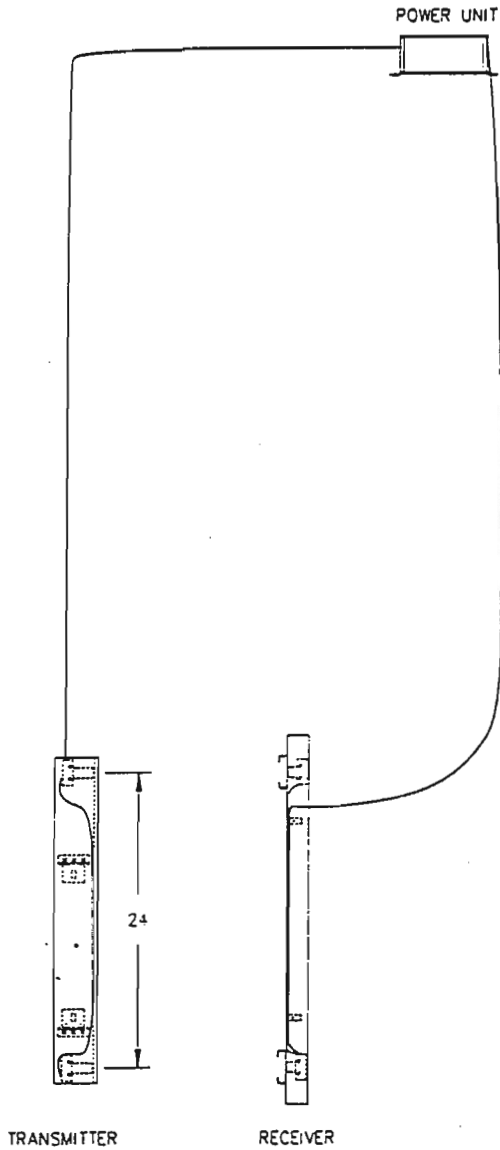
INCLUDES (2) MOUNTING HARDWARE No. IREE-0020N

TYPE "2IREE" 2-BEAM INFRARED ELECTRIC EYE
 WITHOUT SIGHT GUARD (USED WITH OTHER MANUFACTURERS SAFETY EDGE)



S/S AND 2/SP

C/P AND 2SP/CP



R.H. SHOWN
 L.H. OPPOSITE

SUPPLY BOOKLET S-10075-6.1
 WITH EVERY ASSEMBLY

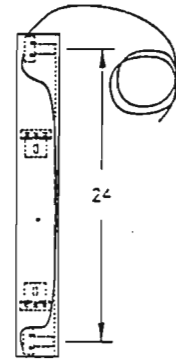
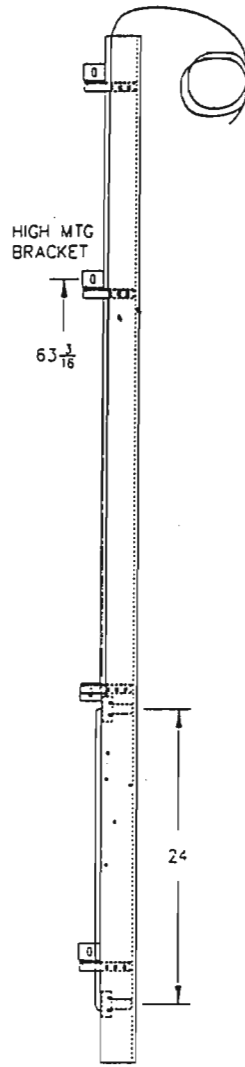
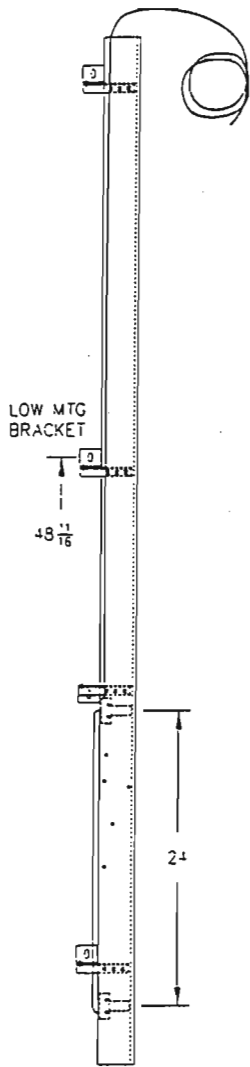
PART No.
IREE-0005R IREE-0005L

INCLUDES MOUNTING HARDWARE No. IREE-0020N

PART No.
IREE-0006N

INCLUDES MOUNTING HARDWARE No. IREE-0020N

TRANSMITTER ASSEMBLIES TYPE "2IREE" 2-BEAM INFRARED ELECTRIC EYE



PART No. IREE-0010R*
IREE-0010L

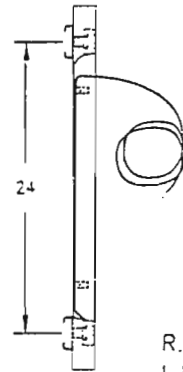
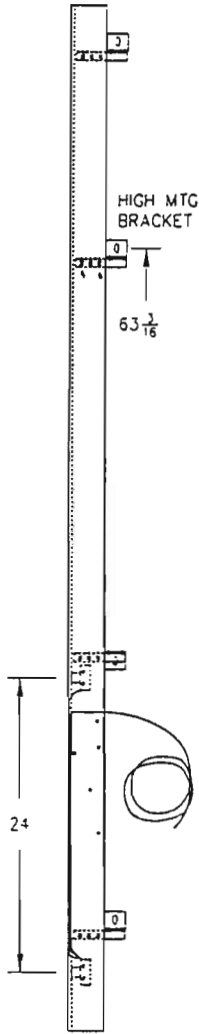
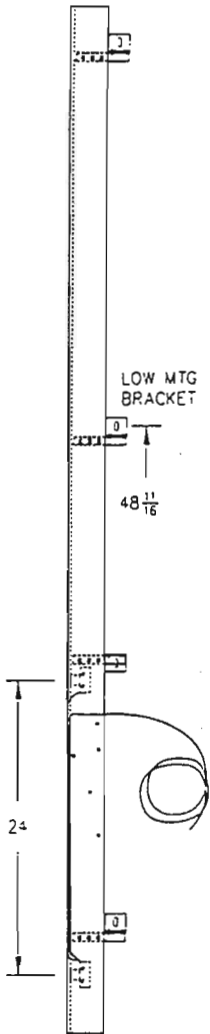
* USE R.H. ASSEMBLY FOR C/P & 2SP/CP INSTALLATIONS

R.H. SHOWN
L.H. OPPOSITE

PART No. IREE-0008R*		IREE-0008L		
"M" DIM.	S/S D.O.	2/SP D.O.	C/P D.O.	2S/CP D.O.
11/15	22-39	24-39	24-49	/
15	/	/	/	40-49

PART No. IREE-0009R*		IREE-0009L		
"M" DIM.	S/S D.O.	2/SP D.O.	C/P D.O.	2S/CP D.O.
19/23	40-48	40-52	50-83	/
23	/	/	/	60-83
27-35	/	53-72	/	/

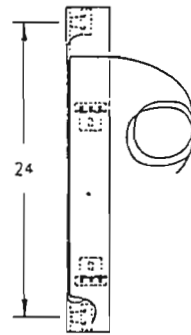
RECEIVER ASSEMBLIES TYPE "2IREE" 2-BEAM INFRARED ELECTRIC EYE



R.H. SHOWN
L.H. OPPOSITE

S/S & 2/SF

PART No.
IREE-0013R
IREE-0013L



C/P & 2SP/CP

PART No.
IREE-0014N

C/P & 2SP/CP

PART No. IREE-0011N		
"M" DIM.	C/P D.O.	2S/CP D.O.
11/15	24-49	/
15	/	40-49

C/P & 2SP/CP

PART No. IREE-0012N		
"M" DIM.	C/P D.O.	2S/CP D.O.
19/23	50-83	/
23	/	60-83